

Springboard or Tunnel?

Prof Peter Haycock

Dr Sam Bishop

Allison Gardner

Premise



Foundation Years should be a springboard to a good degree classification,

not a tunnel for those not really suited to university education



Routes into HE

A levels

BTEC

Access

NVQ

Foundation Years

Overseas

IB

Questions

- What is a Foundation Year?
- What type of student and why?
- Contact hours?
 - Intensive or light
- Compulsory classes?
- Assessments?
 - Course work, exams, multiple choice
- Creative thinking and motivation?
- Independent study?
- Scaffolding?
- Transition?
- Confidence?

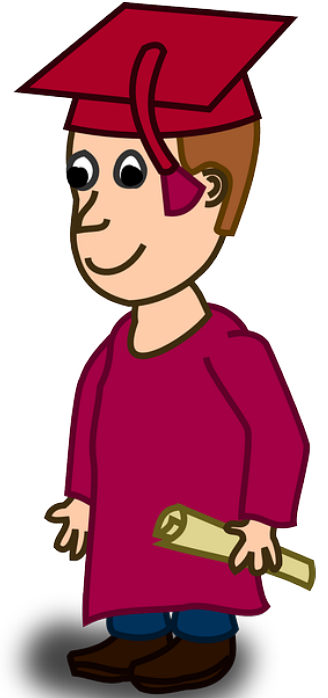


Example 1 – September FY

- 75% Home students
- All classes compulsory
- Developing independence
- Academic Development (skills)
- Close personal tutoring
- Failure leads to reassessment
- Failure again leads to repeating the year
- Many modules have exams or class tests
- Most also have course work



Outputs



- 11% first class
- 50% 2i
- Roughly equivalent to direct entrants
- So *not* a back door or tunnel for low achievers
- Comparable route to other qualifications
- Springboard?
 - low qualifications on entry \rightarrow 1/2i \checkmark
 - Low qualifications on entry \rightarrow 2ii or lower ?

Example 2 – April FY

- 100% Overseas students
- Accelerated course
- No resitting of final exams
- Retains element of independent study
- But small classes
- Intensively taught
- More like private school approach
- More goal rather than experience orientated



Outputs

- No degree results yet
- But good FY results, mainly 60% or more
- Solid foundation as a springboard to degree

Questions

- What is a Foundation Year?
 - Mass education similar to FE?
 - Private tutoring for A level equivalence?
 - Focussed preparation for university?
 - Social/academic/environmental integration?
- Are the differences in case studies justified?
 - Pedagogically?
 - Based on student need?
 - By the needs of the degree programmes?
 - Pragmatically?
- Should FYs provide:
 - an equivalent preparation?
 - a springboard?
- Receiving faculty perception:
 - Tunnel or Springboard?
- What is our perception?